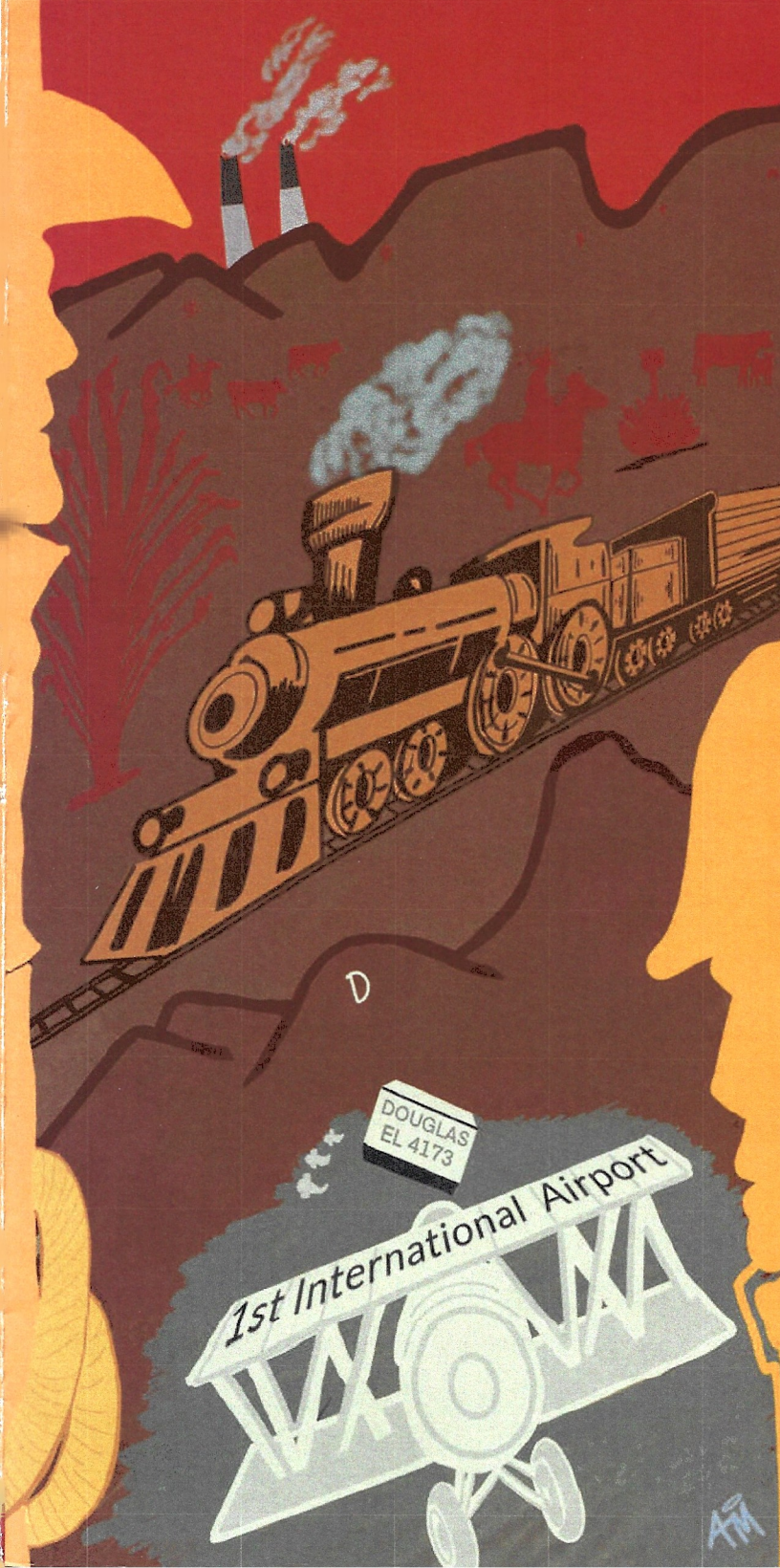


Douglas

Arizona

History • Art • Culture

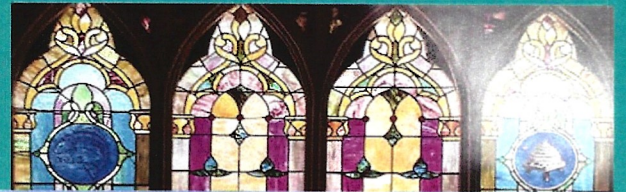


St. Stephen's Episcopal Church

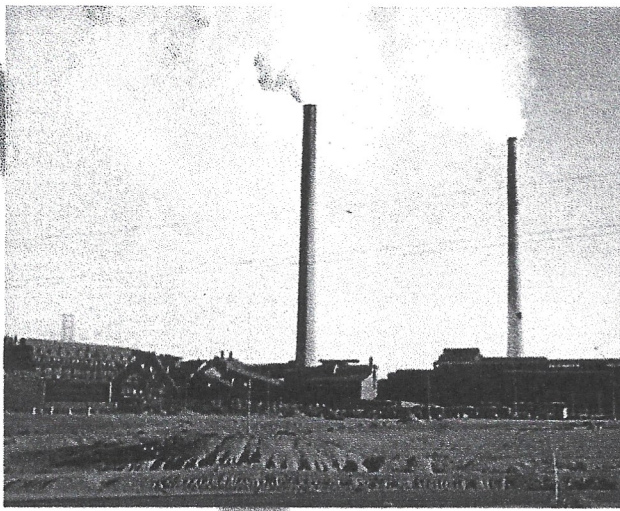


A tribute to...

Church



First Presbyterian Church

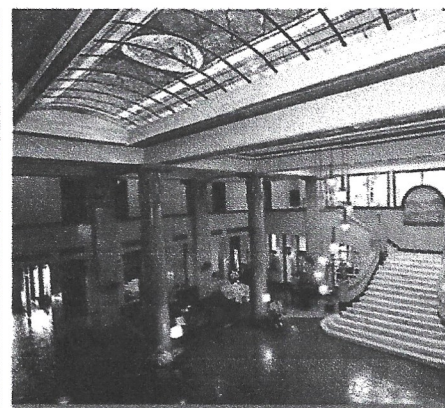


History

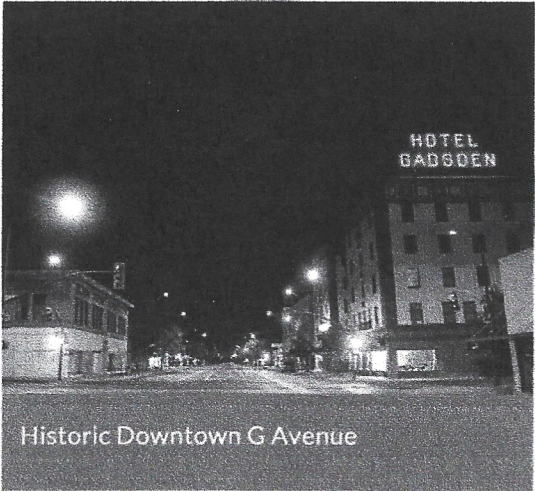
"The Smelter City"

Douglas was founded as an American smelter town by Dr. James Douglas, president of the Phelps Dodge Corporation. The City of Douglas was officially incorporated in 1905. The smelter was the main industry in Douglas and played a major role in its economic development. The copper ore was processed from the mine in Bisbee until 1987.

1901



Historic Gadsden Hotel
1046 N G Ave, Douglas, AZ, 85607
520-364-4481

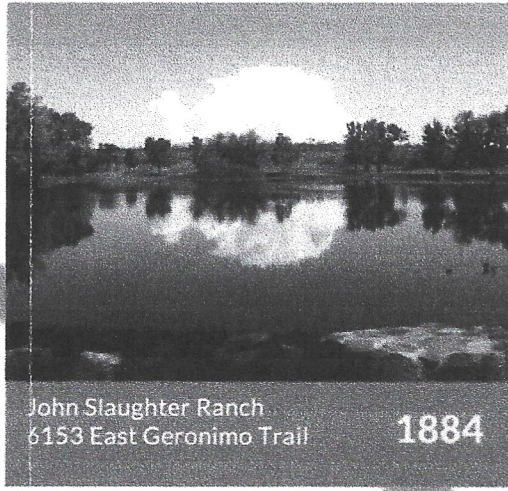


Historic Downtown G Avenue

HISTORIC

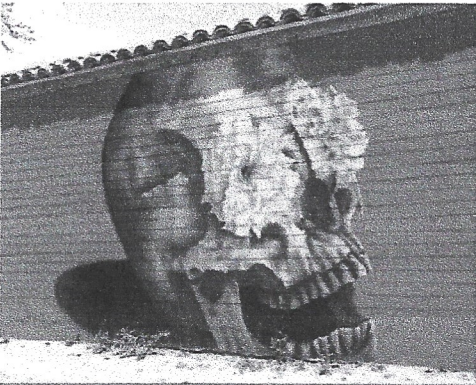


DOUGLAS



John Slaughter Ranch
6153 East Geronimo Trail

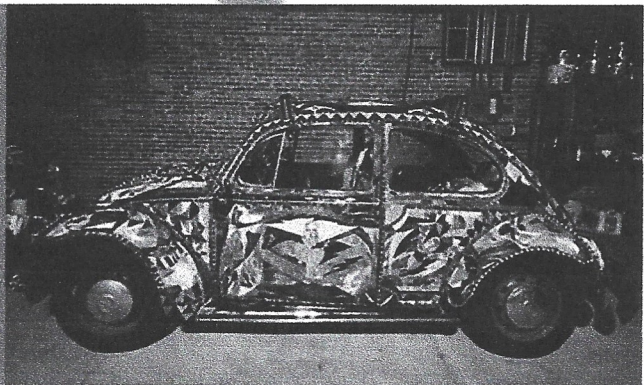
1884



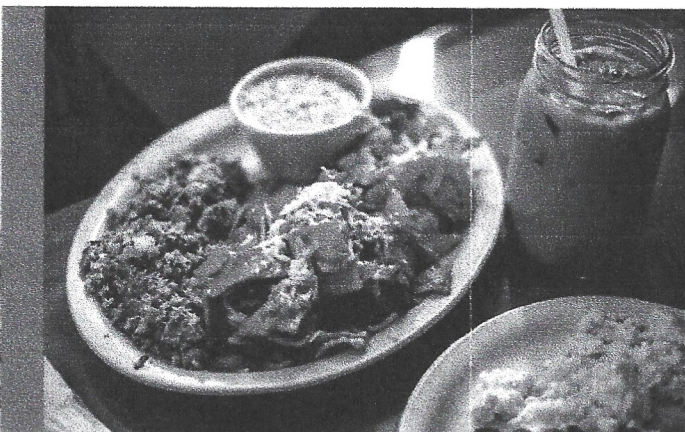
Dia de Muertos Artwork
De la Cruz
1303 F Ave.

Art

Douglas is home to a thriving bi-national arts community. Several murals scattered around town, such as the Dia de Muertos, are designed by local talent. The museums and galleries each have a unique expression of art. The stained-glass Volkswagen, among many other intricately designed cars, is located at Art Car World. The majestic lobby of the Gadsden features a breathtaking collection of stained-glass art and murals.



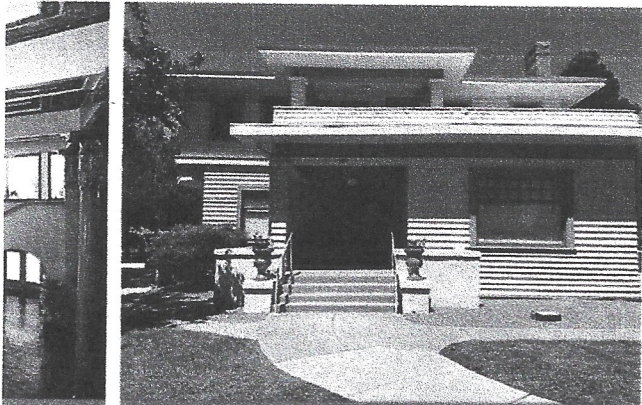
Art Car World
401 E 9th Street
520-805-1850 / www.artcarworld.org



Culture

The vibrant bi-national culture is reflected in the bright colors of the Folklorico dresses and the rich flavor of the Sonoran food. There are over 20 different Mexican restaurants to choose from! The enchiladas, Sonoran hot dogs, and chiltepin chili peppers are local favorites. You won't leave hungry!

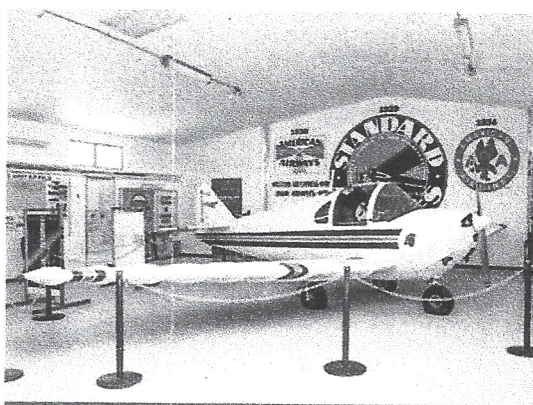




Douglas-Williams House / Historical Society
1001 D Ave
520-364-7370

1907

1909



Border Air Museum
3200 10th Street (Airport Road)
Open by appointment (520) 417-7354

Douglas is home to America's 1st International Airport! Amelia Earhart was one of many to land in Douglas. The Border Air Museum contains detailed accounts of the multiple aviation events that date back to 1908.

1933



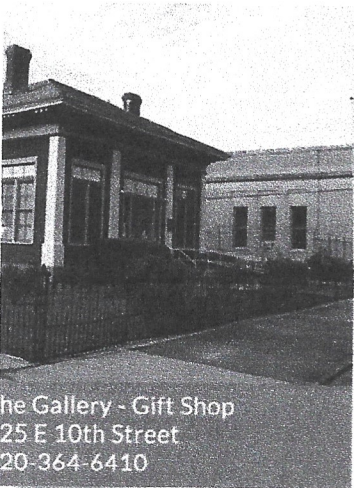
Douglas has an incredible baseball history.

In 1958, every player on the starting lineup of the Douglas Copper Kings baseball team hit a home run, defeating the Chihuahua Dorados 22-8. It was considered the only time in baseball history that this record has been achieved.

Douglas continues to be passionate about Baseball. To date, high school and little league teams still play at the historic Copper Kings Stadium



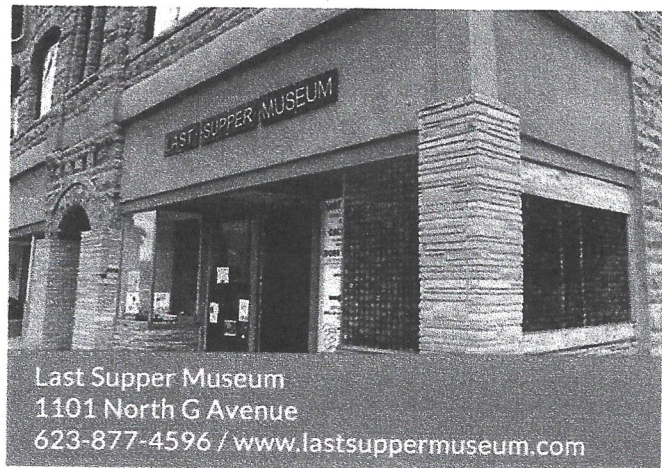
The El Paso & Southwestern Railroad Depot (ES&SW) was constructed in 1913. The railroad line dates to the early 1900s. Its location was ideal because it was a downhill slope for cars carrying copper ore from Bisbee and Nacozari, Sonora. The two-story Beaux-Arts Classic Revival style depot continued operating until 1969. It was restored in 1992 to serve as the headquarters of the Douglas Police Department.



The Gallery - Gift Shop
25 E 10th Street
20-364-6410



Studio 917
917 G Ave.
studio917dale@gmail.com

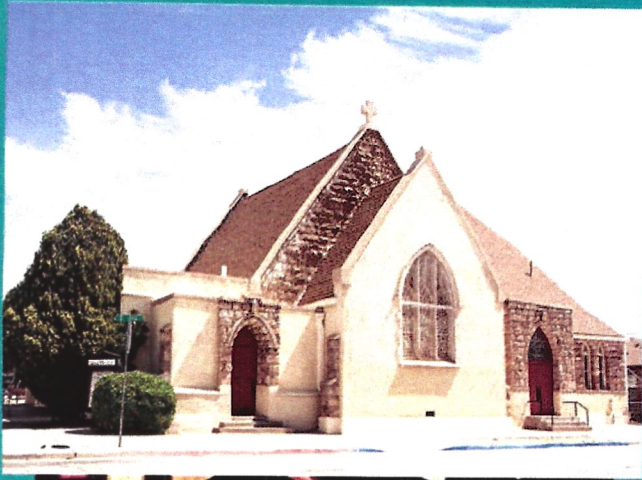


Last Supper Museum
1101 North G Avenue
623-877-4596 / www.lastsuppermuseum.com



Douglas

Methodist Church



Square

Church Square is the only block in the nation that contained four different churches.



First Baptist Church

WELCOME TO DOUGLAS, AZ!

A city with a rich history, vibrant culture, inspirational art and diverse ecosystem along the "Historic" Highway 80. We are the gateway to Mexico.

Douglas has been a crossroads for people and cultures for centuries, which have influenced the array of architectural styles in the downtown and residential historic district. From the Classic Revival Style of the Grand Theatre to the opulent lobby of the Gadsden Hotel, there was no expense spared when this community was established.

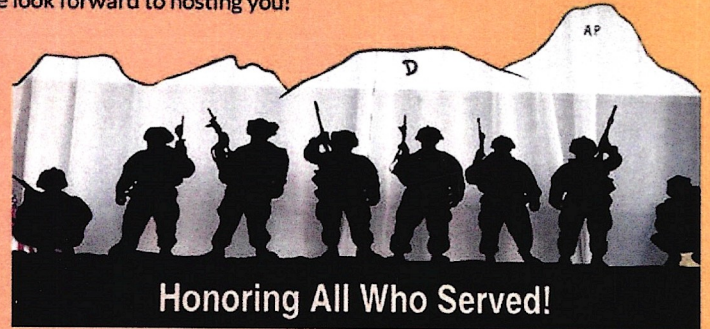
HISTORY: The Douglas Historical Society is located at the Douglas Williams House Museum. There is a collection of historical accounts of copper mining, cattle ranching, baseball, diverse cultures, and so much more to discover about our past.

ART: The Border Arts Corridor "BAC", Studio 917, and The Gallery host rotating exhibits and displays of local and international artists.

FOOD: With over 30 restaurants to choose from- over 20 are Mexican food! Ask about local tamales that are sold by the dozen and imported flour tortillas from across the border. This is not the place to count calories or carbs!

OUTDOORS: With an elevation of a little over 4000 ft., we get to experience "a touch" of the 4 seasons. Our climate is ideal for hiking, biking and camping in the nearby mountains or birdwatching at Whitewater draw, where the Sand Hill Cranes come for the winter. Our clear skies and colorful sunsets are a breathtaking sight to see!

We invite you to come explore the "other" southern charm and hospitality. We look forward to hosting you!



Veteran's Wall of Faces Exhibit
1046 G Avenue

Patriotism on the border, honoring all who served. Douglas is recognized as a "Purple Heart City". The Wall of Faces and Purple Heart exhibit (located in the Gadsden Hotel) is a powerful reminder of the sacrifices that have been made by the men and women of the Douglas & Agua Prieta community. The exhibit features over 700 photographs and stories of Veterans written by the Veterans themselves, their families and friends. Serving our country was the path to citizenship for over 20% of the faces that are featured in the exhibit. We invite you to come and read the countless stories of Valor.



CITY OF DOUGLAS VISITOR CENTER

345 16TH ST, DOUGLAS, AZ 85607

(520) 417-7354

info@douglasaz.gov City of Douglas Visitor Center

Monday - Friday 9:00 A.M. to 5:00 P.M. Saturday 10:00 A.M. to 2:00 P.M.